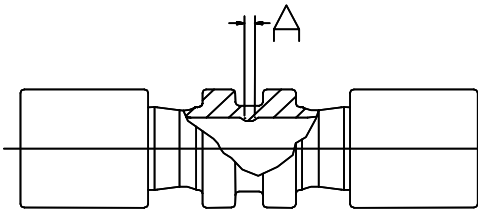


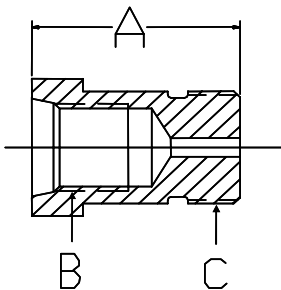
**CN-3300-CPL-TXX**



Fitting Size TXX	Piece Number	Take - Out A
*1/4" (T04)	9041810	0.04

\*1/4" (T04) Fitting is made with a travel stop to aid with assembly.

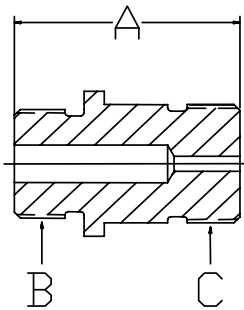
**CN-3300-ADPT-XXF-YYM**



Fitting Size TXX	Piece Number	Take - Out, A	Thread B	Thread C
n/a	9062254	0.98	7/16 - 20 UNF	9/16 - 18 UNF

\*Thread B & C conform to SAE J1926/1

**CN-3300-ADPT-XXM-YYM**

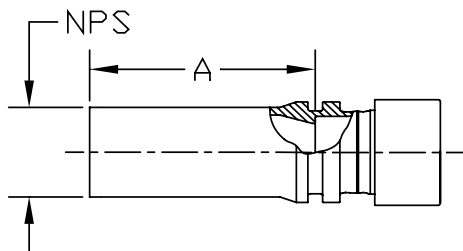


Fitting Size TXX	Piece Number	Take - Out, A	Thread B	Thread C
n/a	9062188	1.02	7/16 - 20 UNF	9/16 - 18 UNF

\*Thread C conforms to SAE J1926/1

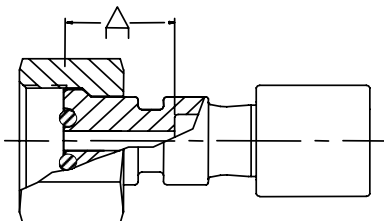
Thread B conforms to SAE J1926/2

**CN-3300-REDB-TXX-YY NPS**



Fitting Size TXX-YY NPS	Piece Number	Take - Out, A
T04-1/4	9062290	1.78

**CN-3300-UTAIL-TXX**



Fitting Size TXX	Piece Number	Take - Out, A	Across Flats	Thread
T04	9041811	0.49	0.68	9/16 - 18 UNF