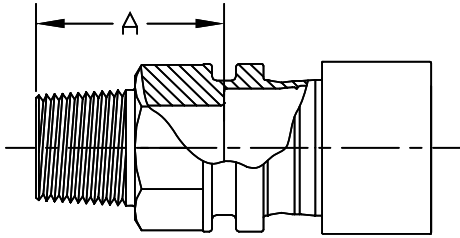


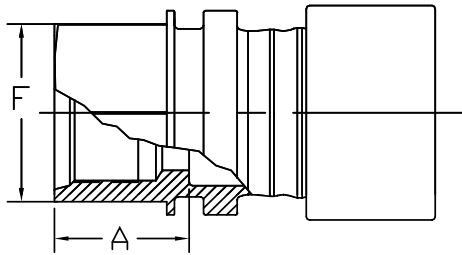
## SS-3300-ADPT-PXX-XX MPT



National Stock #	Fitting Size PXX-XX MPT	Piece Number	Take - Out, A	Across Flats	Thread NPT
	P04-1/4	consult Lokring	1.45	0.63	1/4 - 18
	P06-3/8	consult Lokring	1.58	0.75	3/8-18
	P08-1/2	9061852	1.46	0.94	1/2-14
	P12-1/2	consult Lokring	1.82	0.87	1/2-14
	P12-3/4	9061927	1.95	1.12	3/4-14
	P16-1	9061928	2.26	1.37	1 - 11.5
	P20-1 1/4	9062018	2.37	1.75	1 1/4 -11.5
	P24-1 1/2	9062017	2.53	2.00	1 1/2 -11.5

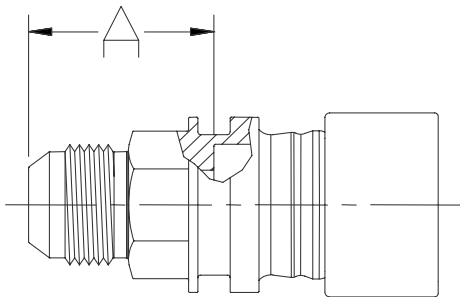
\*Threaded end conforms to MALE NPT

## SS-3300-ADPT-PXX-YY SAE



National Stock #	Fitting Size PXX-YY SAE	Piece Number	Take - Out, A	Across Flats	Thread
	P08 - 0.50	9062538	0.82	1.06	3/4-16 UNF-2B

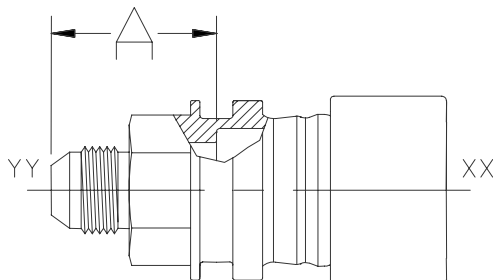
## SS-3300-ADPT-PXX-37FYF



National Stock #	Fitting Size PXX-37FYF	Piece Number	Take - Out, A	Across Flats	Thread UN
	P04-37F04	9060035	1.14	0.69	7/16-20
	P06-37F06	9061684	1.04	0.63	9/16-18
	P08-37F08	9061109	1.36	1.11	3/4 - 16
	P12-37F12	9061574	1.60	1.13	1 1/16-12
	P16-37F16	9061575	1.64	1.38	1 5/16-12
	P20-37F20	9061883	1.68	1.69	1 5/8 -12

\*Threaded end conforms to SAE J514 (37° Flare)

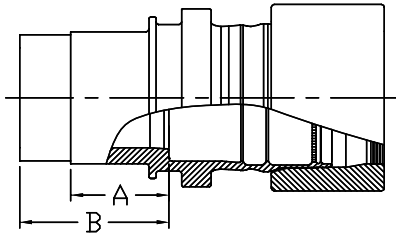
## SS-3300-RADPT-PXX-37FYF



National Stock #	Fitting Size PXX-37FYF	Piece Number	Take - Out, A	Across Flats	Thread UN
	P08-37F12	9061573	1.56	1.12	1 1/6-12
	P12-37F08	9061110	1.39	1.11	3/4 - 16
	P12-37F24	9062735	3.04	2.00	1-7/8 - 12
	P16-37F12	9061111	1.73	1.13	1 1/16-12

\* Threaded end conforms to SAE J514 (37° FLARE)

## SS-3300-ADPT-PXX-YY NPS

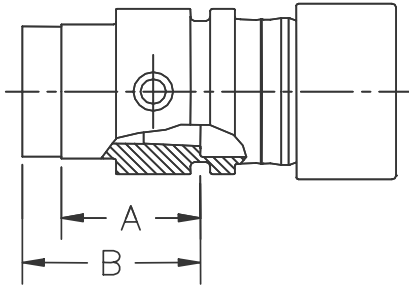


National Stock #	Fitting Size PXX-YY NPS	Piece Number	Take - Out, A	Take - Out, B
	P06 - 3/8	consult Lokring	1.00	1.34
	P08 - 1/2	consult Lokring	1.00	1.40
	P12 - 3/4	consult Lokring	1.00	1.46
	P16 - 1	consult Lokring	1.00	1.52
	P20 - 1 1/4	consult Lokring	1.00	1.59
	P24 - 1 1/2	9062204	2.00	2.55

\*Non LOKRING™ end made to match up with socket weld adapter

## SS-3300-VADPT-PXX-YY NPS

(VENTED SOCKET WELD ADAPTER)

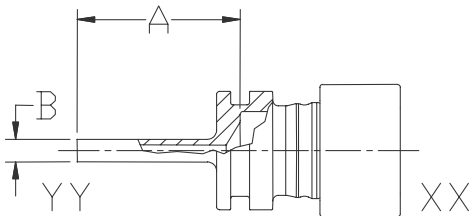


National Stock #	Fitting Size PXX-YY NPS	Piece Number	Take - Out, A	Take - Out, B
	P24-1-1/2	9062202	2.00	2.55

\*Non LOKRING™ end made to match up with socket weld adapter

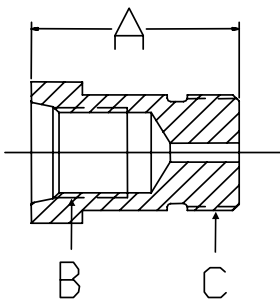
\*Cross hole sized for 1/4 NPS SCH40 nipple

## SS-3300-ADPT-PXX-YY OD STUB



National Stock #	Fitting Size PXX-YY OD	Piece Number	Take - Out, A	Dia, B
	P04-1/4	9060981	1.75	0.25
	P08-1/4	9062133	1.75	0.25

## SS-3300-ADPT-XXF-YYM

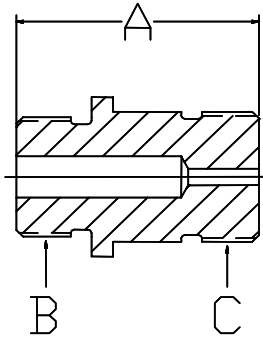


Fitting Size TXX	Piece Number	Take - Out, A	Thread B	Thread C
n/a	9062255	0.98	7/16 - 20 UNF	9/16 - 18 UNF

\*Thread C conforms to SAE J1926/1

Thread B conforms to SAE J1926/2

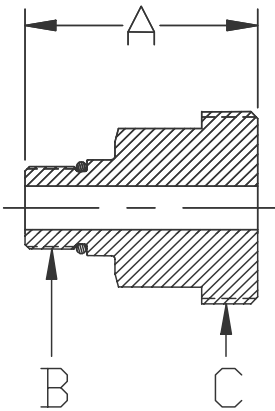
## SS-3300-ADPT-XXM-YYM



Fitting Size PXX	Piece Number	Take - Out, A	Thread B	Thread C
n/a	9062187	1.15	7/16 - 20 UNF	9/16 - 18 UNF

\*Thread B & C conform to SAE J1926/1

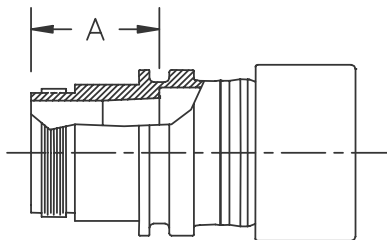
## SS-3300-ADPT-UTHRD-PXX-YY SAE (M)



Fitting Size PXX	Piece Number	Take - Out, A	Thread B	Thread C
n/a	9062522	2.07	3/4-16 UNF	1-3/4-12UN
n/a	9062523	2.07	3/4-16 UNF	2-12 UN

\*Thread B conforms to SAE J1926/2

## SS-3300-ADPT-PXX-YY HOSE

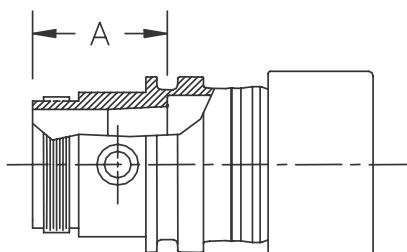


National Stock #	Fitting Size TXX-YY HOSE	Piece Number	Take - Out, A	Thread
	P24-1/2	9062023	1.83	1 1/2-11 1/2 NPSH

\*Thread conforms to ANSI B2.4

## SS-3300-VADPT-PXX-YY HOSE

[VENTED HOSE ADAPTER]



National Stock #	Fitting Size TXX-YY HOSE	Piece Number	Take - Out, A	Thread
	P24-1/2	9061875	1.83	1 1/2-11 1/2 NPSH

\*Cross hole sized for 1/4 NPS SCH40 nipple

\*Thread conforms to ANSI B2.4