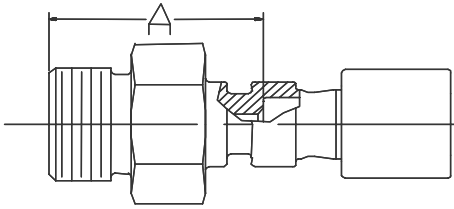


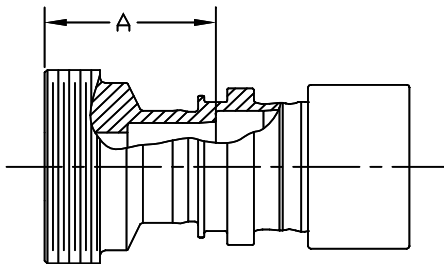
## SS-3300-UTHRD-TXX



Fitting Size TXX	Piece Number	Take - Out, A	Across Flats	Thread
T04	9062214	1.22	0.69	9/16 - 18 UNF

\*Thread conforms to SAE J1453

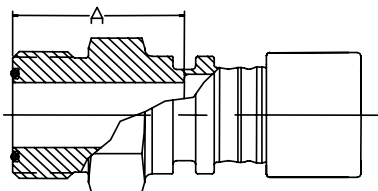
## SS-3300-UTHRD-TXX-XX NPS



Fitting Size TXX-XX	Piece Number	Take - Out, A	Across Flats	Thread
T06-0.25	9061916	1.26	0.94	1.188 - 12 UN

\*6000# wog Union to Navy Dwg. 803-1385884

## SS-3300-UTHRD (SAE)-TXX

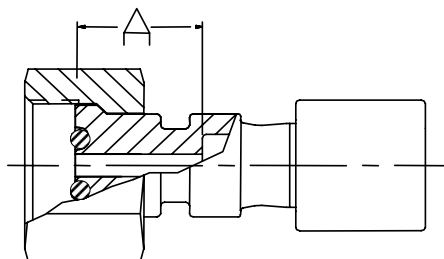


Fitting Size TXX	Piece Number	Take - Out, A	Across Flats	Thread
T12	9062141	1.52	1.25	1-3/16 - 12 UN

\*Thread conforms to SAE J1453

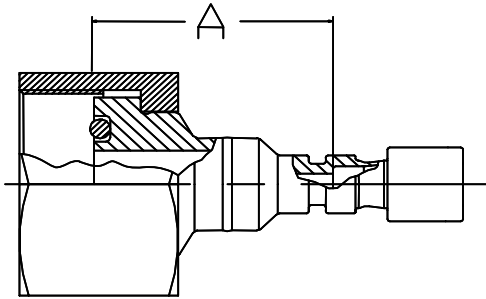
\*Complete with Viton o-ring

## SS-3300-UTAIL-TXX



Fitting Size TXX	Piece Number	Take - Out, A	Across Flats	Thread
T04	9041812	0.49	0.68	9/16 - 18 UNF

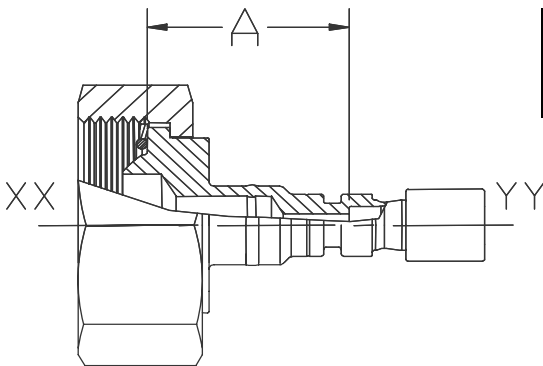
**SS-3300-RUTAIL-XX NPS-TXX**



Fitting Size XX NPS-TXX	Piece Number	Take - Out, A	Thread
3/8-T04	9062197	1.60	1-3/8 - 12 UNS
3/8-T06	9062320	1.33	1-3/8 - 12 UNS
3/8-T12	9062321	1.17	1-3/8 - 12 UNS

\*Nut and seal face conform to 6000# wog Union to Navy Dwg 803-1385884, o-ring is Buna-N

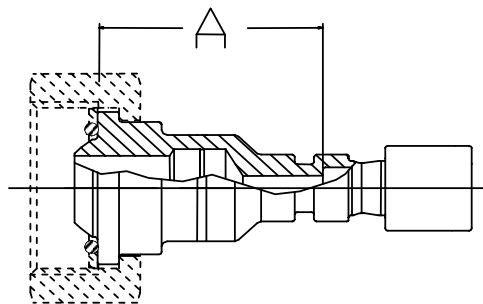
**SS-3300-1183 UTAIL-XX-TYY**



Fitting Size XX-TYY	Piece Number	Take - Out, A	Thread
1/2-T04	9062570	1.41	1.491 - 14 UNS

Seal face conforms to MIL-F-1183

**SS-3300-1183 UTAIL-PXX-TXX**

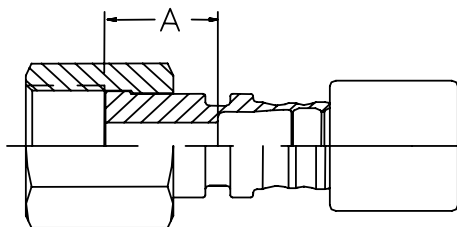


Fitting Size TXX	Piece Number	Take - Out, A	Thread
P04-T04**	9062135	1.36	1.089 - 16 UNS

\*\*Nut, o-ring, and backup washer customer supplied

Seal face conforms to MIL-F-1183

**SS-3300-UTFF-TXX**



Fitting Size TXX	Piece Number	Take - Out, A	Across Flats	Thread
T04	9061446	0.49	0.68	9/16 - 18 UNF
T06	9061753	0.59	0.81	11/16 - 16 UN
T08	9061754	0.97	0.94	13/16 - 16 UN
T10	9061755	1.22	1.13	1 - 14 UNS
T12	9061756	1.55	1.38	1-1/4 - 12 UNF

\*Threaded end (with exception of T12) conforms to SAE J1453