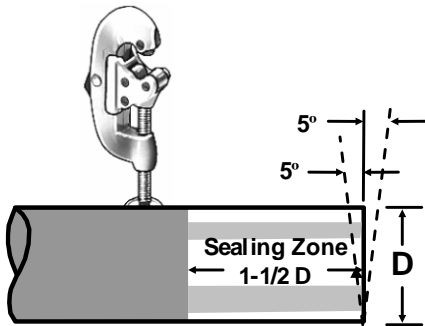


INSTALLATION PROCEDURE

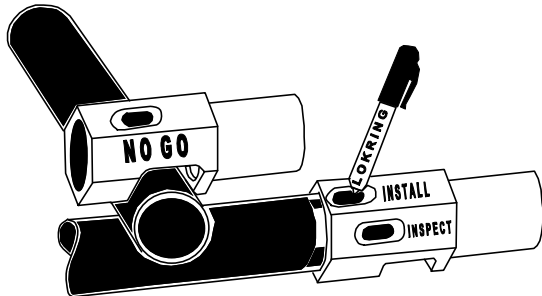
Note: Refer to LOKRING procedure LP-110 for detailed installation instructions

STEP 1: Sealing Zone shall be 6" from brazed joint. If necessary, before cutting tube, use a non-shedding abrasive pad to clean surface and remove scratches from tube OD. Care should be taken to not contaminate the inside of the tube. Always clean tube sealing zone in circumferential direction

Cut tube with clean tubing cutter to within 5° square.

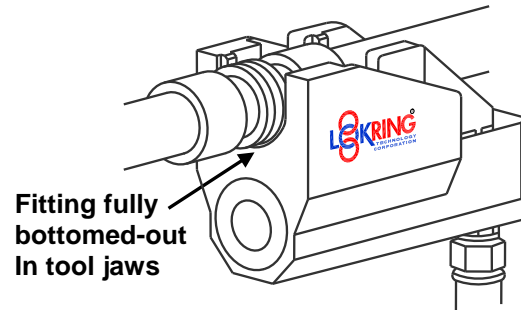
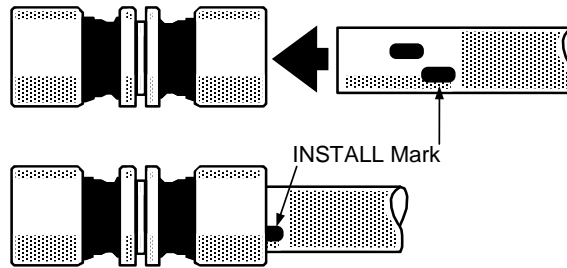


Step 2: Using the Multi-Purpose Gauge, verify that the tube OD is correctly sized, and mark the tube ends as shown.



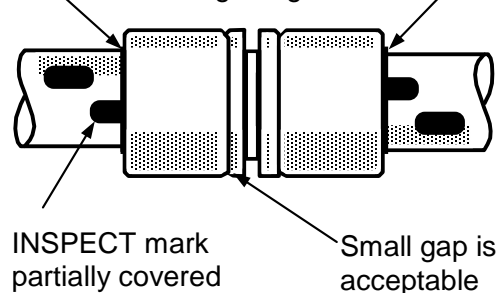
STEP 3: Select and assemble required LOKRING tool. Inspect and cycle tool to assure proper function.

STEP 4: Position fitting on "INSTALL" mark, fully engage and actuate tool.



STEP 5: Carry out visual checks below to verify successful installation.

Fitting body protrudes from underneath swage ring



LOKRING INSTALLER'S Field Installation Guide

For Series BR
Brass LOKRING™ Tube
Fittings. For use with Copper
Tube in
Medical Gas and Vacuum
Applications and B88 (Drawn)
& B819 Copper Tubing

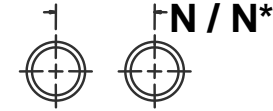
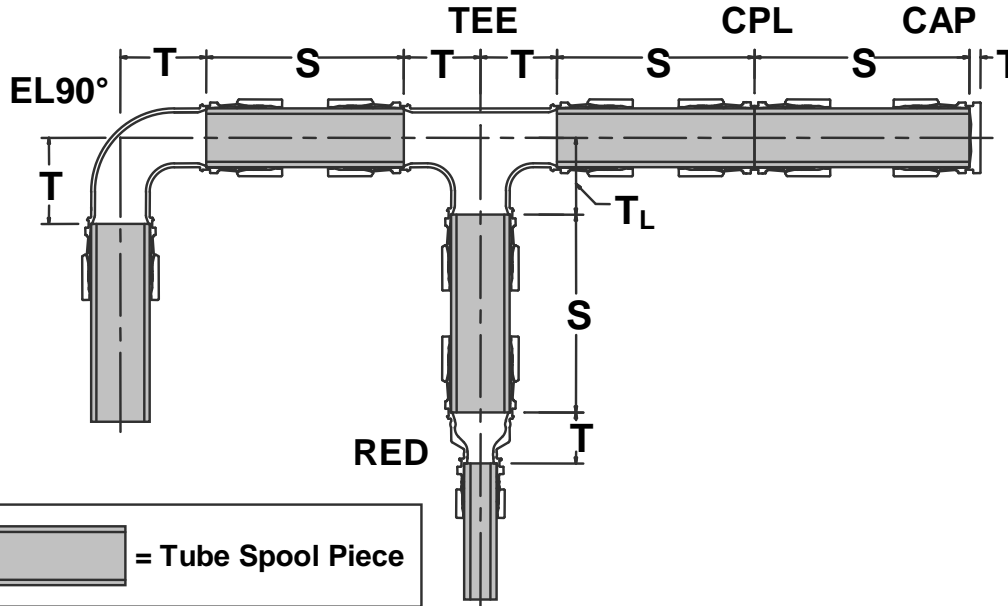


38376 Apollo Parkway
Willoughby, OH 44094, USA
Tel.: (440) 942-0880
Fax: (440) 942-1186

www.lokring.com

© Copyright 2009 Lokring Technology, LLC
All rights reserved

8.03G Tri-Fold Handout For BR MedGas
and ASTM B88 (Drawn) & B819 Copper
Tube (07-02-09)



Fitting Size	N Minimum Spacing Center to Center	N* Minimum Spacing Center to Center, with fittings adjacent each other
(T08) IT20	1.62	1.76
(T10) IT20	1.68	1.82
(T12) IT20	1.74	1.91
(T16) IT45	2.64	2.85
(T20) IT45	2.77	3.01
(T24) IT45	2.89	3.19
(T32) IT50	3.29	3.67

LOKRING Fitting ¹ Size	LOKTOOL Head	"S" Min ²	Fitting Take-Out "T" in 1/16" Increments				Reducers	RED (T)
			CAP (T)	EL90 (EII) (-LR) (T)	TEE (T)	TEE (T _L)		
1/2" BR-XXX-T08 (0.625" OD)	IT20	3-1/16"	1/4"	*	*	*	5/8" X 1/2" (T10-T08)	3/16"
5/8" BR-XXX-T10 (0.750" OD)	IT20	3-7/16"	1/4"	*	*	*	3/4" X 5/8" (T12-T10)	3/16"
3/4" BR-XXX-T12 (0.875" OD)	IT20	3-11/16"	3/16"	*	*	*	1" X 3/4" (T16-T12)	3/8"
1" BR-XXX-T16 (1.125" OD)	IT45	4-3/4"	5/16"	*	*	*	1-1/4" X 1" (T20-T16)	1/4"
1- 1/4" BR-XXX-T20 (1.375" OD)	IT45	5-7/16"	5/16"	*	*	*	1-1/2" X 1-1/4" (T24-T20)	5/16"
1-1/2" BR-XXX-T24 (1.625" OD)	IT45	6"	5/16"	*	*	*	2" X 1-1/2" (T32-T24)	1/2"
	IT50	6-1/8"						
2" BR-XXX-T32 (2.125" OD)	IT50	7-11/16"	7/16"	*	*	*		

1. For use on positive pressure medical gas tube per B819 and for vacuum copper tube per ASTM B88.
2. Minimum cut spool length "S" listed is for reverse installation. Spool lengths may be decreased slightly if one fitting end can be pulled up prior to positioning the second end and the reverse position of the tool is used for the installation.

* Consult LOKRING for Take-Out dimension